

tala<sup>®</sup>

---

*Alumina Lamp*  
*Rest of the World*

---

*Alumina Lamp*



tala.

## *Alumina Lamp*

Designed for life on the go, the Alumina Lamp is a modern, multi-functional light that can be used as a table lamp or wall sconce, delivering perfect dimming with tactile function.

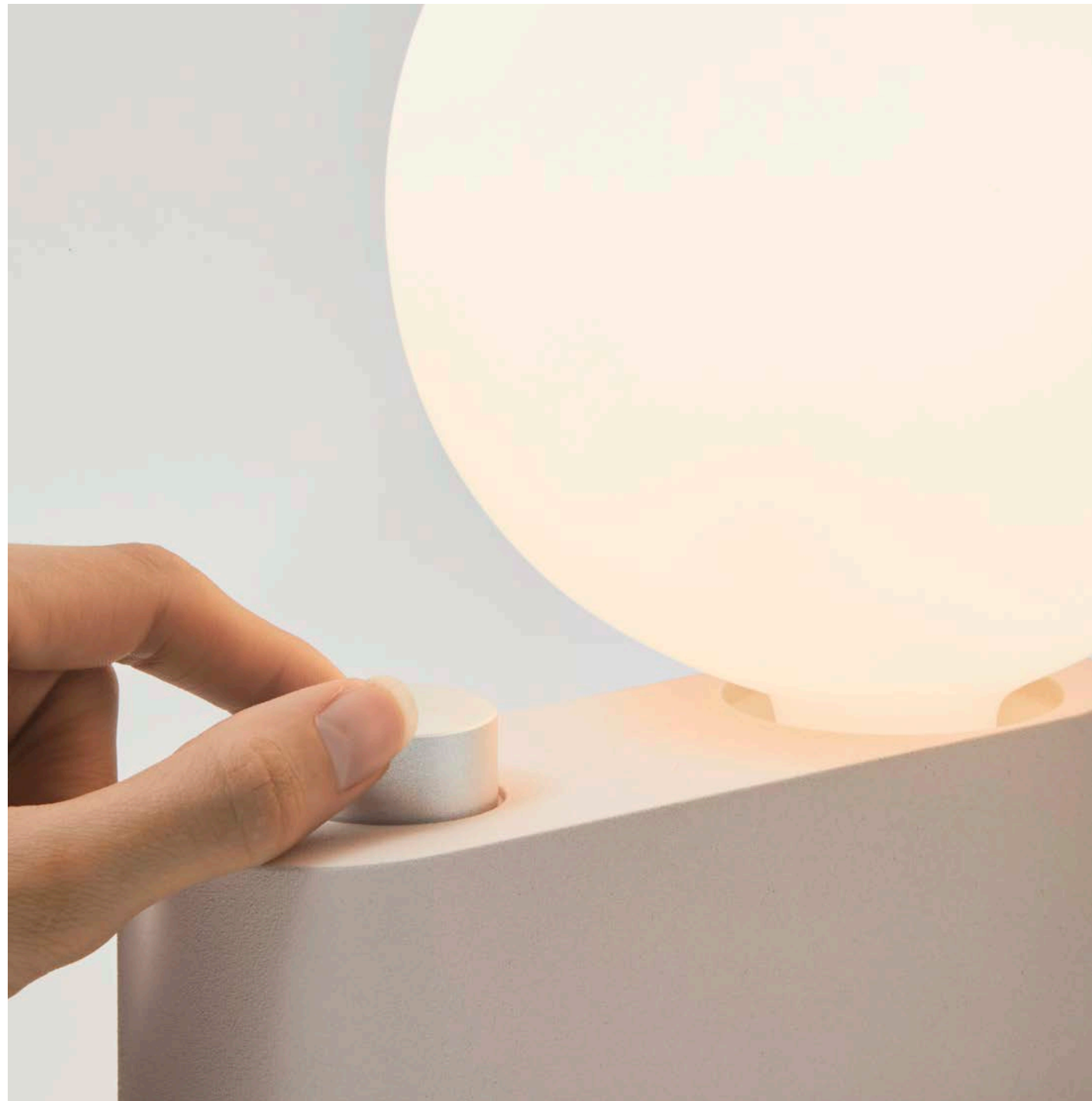
### ALUMINA PRODUCT LIST:

- Alumina Lamp – Chalk
- Alumina Lamp – Charcoal
- Alumina Lamp – Sage
- Alumina Lamp – Blossom
- Alumina Lamp – Sapphire



## *Alumina Lamp*

Made from lightweight aluminium, this plug and play product is ideal for the rental market offering users the ability to transform small or awkward spaces with a beautiful lighting object.



tala.

## *Inspiration*

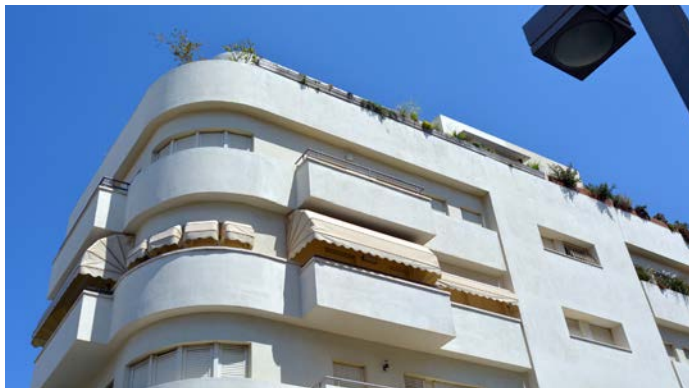
Originally designed to showcase the new Sphere bulb and its in-built Dim to Warm technology, the aesthetic was borne of a desire to create an adaptable and accessible solution for modern urban living.

Working as a 2-in-1 solution, it doesn't require hard-wiring or drastic decoration changes.

The simple form of the lamp frame is a result of the intended function, using ergonomic theory to ensure ease of use.

Applying the theory and concepts of Bauhaus, our design team created Alumina as a way of returning to simple, purposeful forms.

Drawing inspiration from the White City in Tel Aviv, the colourways were a way of referencing classic design endeavours but framed in a Tala product.



tala.

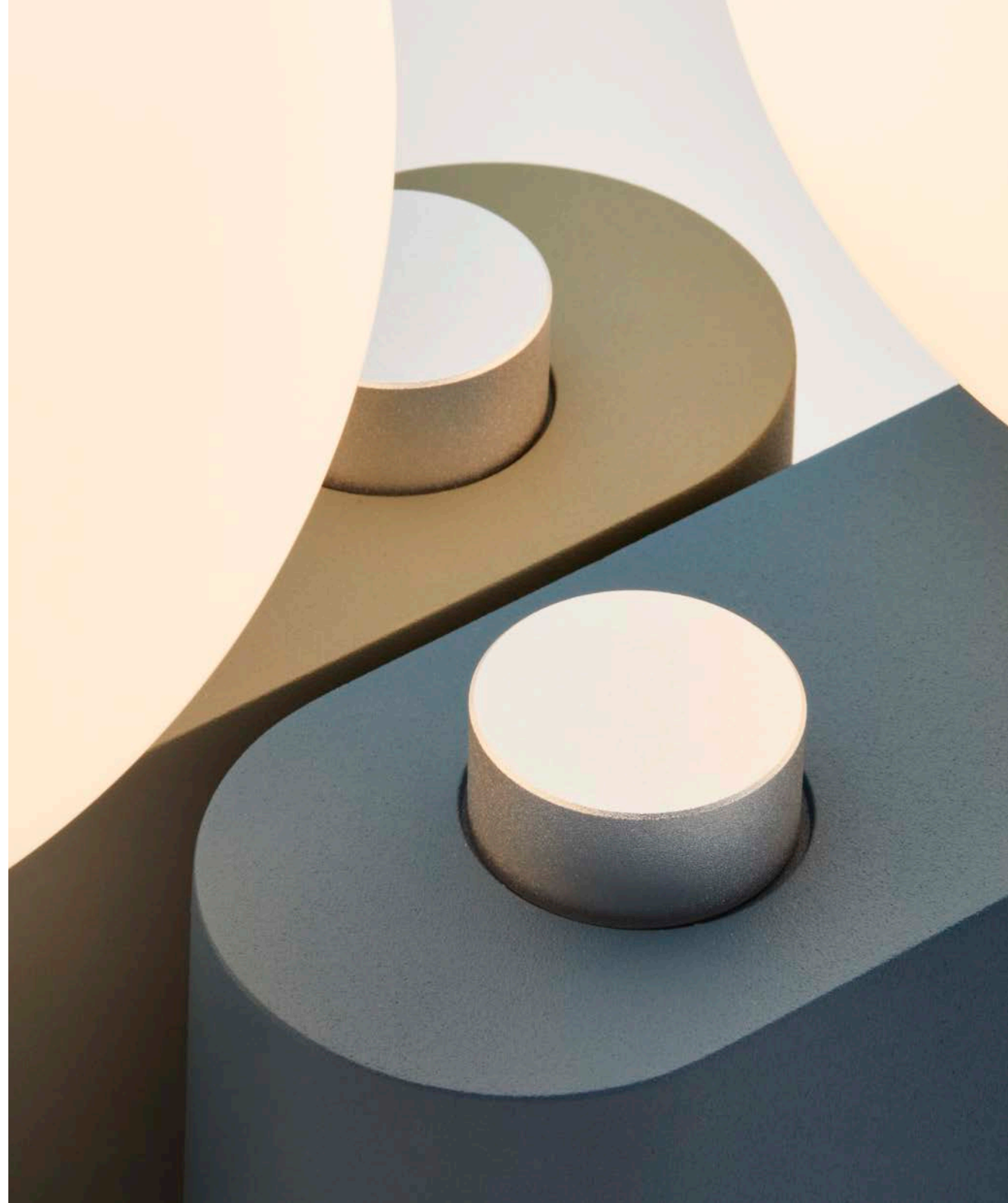
## *Materials*

The lightweight cast aluminium body is ideal for creating the balanced form suitable for powder coating. This is Tala's first step into an array of dusky tones.

Aluminium has excellent recyclability potential and is one of earth's most abundant metals.

The rotary dimmer face plate is a nod to the raw aluminium material.

tala.



# ALUMINA LAMP (UK-EU)

8 WATT | 640 LUMENS | 2000K TO 2800K

DIM TO WARM  
TECHNOLOGY



## LAMP

Shape: G150

**Bulb Materials:**  
Borosilicate Glass  
and Brass Cap

**Bulb Finish:** Matte White

**Beam angle:** 360°

**Base:** E27

**Working temperature:**  
-5°C to 40°C

**Warm up time:** Instant

**Warranty:** 3 years

**Input Voltage:** 220-240V

**Fixture Materials:**  
Powder Coated Aluminium

## PERFORMANCE

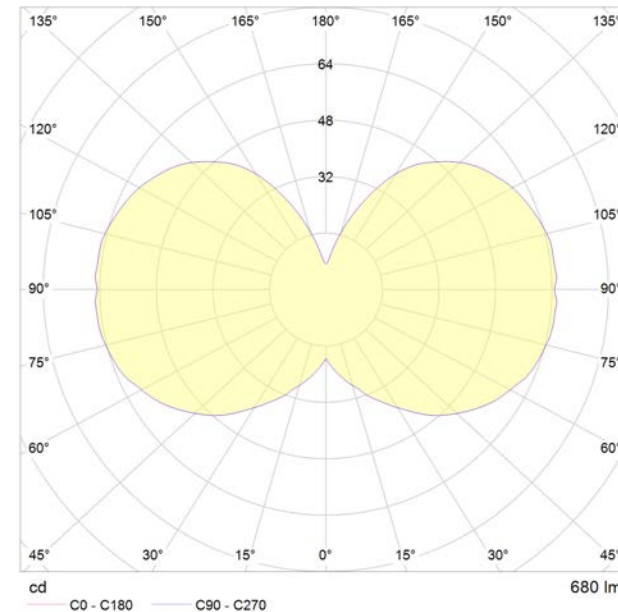
<b>CRI (colour rendering index)</b>	95
<b>Lamp lumen output</b>	680lm
<b>Flicker</b>	<5%
<b>Lumens per circuit watt (LM/W)</b>	85lm/W
<b>Lifetime (TM-21) (hours)</b>	15,000hrs
<b>Colour Temperature</b>	2000K - 2800K
<b>Power factor</b>	0.8

## DIMMING:

**Dimmable:** Yes, in-line dimmer included.

**Dimming type:** Trailing edge

## POLAR DIAGRAM



## DIMENSIONS:

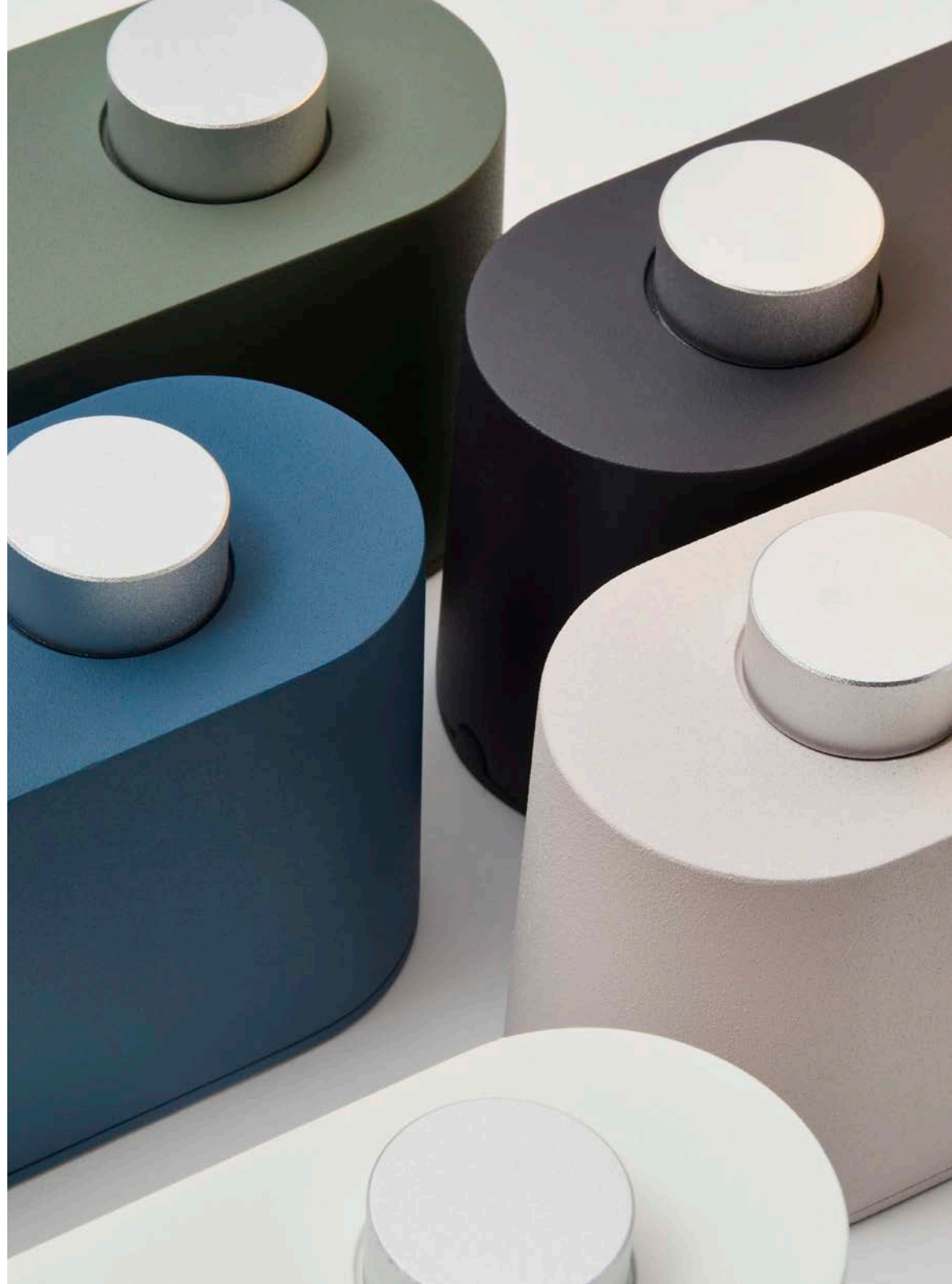
**BULB:**  
150 x 190 mm  
(Width x Length)

**FIXTURE:**  
150 x 220 x 220 mm  
(Width x Length x Height)

## *Colourways*

Alumina is a celebration of exceptional lighting and dusky on-trend colourways. With five powder coated colours to choose from, Alumina offers a simple and muted aesthetic for a range of interiors. When combined with the Sphere IV bulb, the Alumina Lamp can contrast or complement different interior spaces.

tala.





## *Features & Benefits*



Wall Sconce installation

- Multi-functional – equally effective as a table or wall sconce
- A choice of on-trend colour options, with scope for special additions or product pairings
- Excellent cable management for any use case
- Easy installation and maintenance
- Lightweight
- Perfect dimming behaviour
- Accessible price point appealing to younger buyer



## *Alumina Lamp in Charcoal*

A multi-functional light feature that can be used as a table lamp or wall sconce. Finished in sophisticated Charcoal black.

- Easy install
- 4 metre braided cord
- Lightweight aluminium
- Dim to Warm behaviour
- Multi-function
- Modern colour finish

tala.



ALM-SPHR-IV-CHR-TBL-01-UK

## *Alumina Lamp in Chalk*

A multi-functional light feature that can be used as a table lamp or wall sconce. Finished in subtle Chalk white.

- Easy install
- 4 metre braided cord
- Lightweight aluminium
- Dim to Warm behaviour
- Multi-function
- Modern colour finish



ALM-SPHR-IV-CHK-TBL-01-UK

## *Alumina Lamp in Sage*

A multi-functional light feature that can be used as a table lamp or wall sconce. Finished in soft Sage green.

- Easy install
- 4 metre braided cord
- Lightweight aluminium
- Dim to Warm behaviour
- Multi-function
- Modern colour finish

tala.



ALM-SPHR-IV-SGE-TBL-01-UK

## *Alumina Lamp in Blossom*

A multi-functional light feature that can be used as a table lamp or wall scone. Finished in delicate Blossom pink.

- Easy install
- 4 metre braided cord
- Lightweight aluminium
- Dim to Warm behaviour
- Multi-function
- Modern colour finish

tala.



ALM-SPHR-IV-BLS-TBL-01-UK

## *Alumina Lamp in Sapphire*

A multi-functional light feature that can be used as a table lamp or wall sconce. Finished in brilliant Sapphire blue.

- Easy install
- 4 metre braided cord
- Lightweight aluminium
- Dim to Warm behaviour
- Multi-function
- Modern colour finish






tala.



ALM-SPHR-IV-SAP-TBL-01-UK

Price List

ALUMINA COLLECTION - ROW-USD (PRE SALE)

IMAGES	SKU CODE	PRODUCT DESCRIPTION	RRP EXCL. VAT	SIZE W/Ø x L mm	EAN	MATERIAL	PCS/ CARTON
	ALM-SPHR-IV-CHR-TBL-01-UK	Alumina Lamp Charcoal with Sphere IV	\$175.00	150 x 220 x 220	5060400157594	Powder Coated Aluminium & Glass	2
	ALM-SPHR-IV-CHK-TBL-01-UK	Alumina Lamp Chalk with Sphere IV	\$175.00	150 x 220 x 220	5060400157624	Powder Coated Aluminium & Glass	2
	ALM-SPHR-IV-SGE-TBL-01-UK	Alumina Lamp Sage with Sphere IV	\$175.00	150 x 220 x 220	5060400157655	Powder Coated Aluminium & Glass	2
	ALM-SPHR-IV-BLS-TBL-01-UK	Alumina Lamp Blossom with Sphere IV	\$175.00	150 x 220 x 220	5060400157686	Powder Coated Aluminium & Glass	2
	ALM-SPHR-IV-SAP-TBL-01-UK	Alumina Lamp Sapphire with Sphere IV	\$175.00	150 x 220 x 220	5060400158447	Powder Coated Aluminium & Glass	2

*Thank you*

Get in touch

Contact your local rep or email us at [sales@tala.co.uk](mailto:sales@tala.co.uk) to pre-order today.

Website: [tala.co.uk](http://tala.co.uk)

Instagram: [@tala](https://www.instagram.com/tala)

**tala.**

